

»» LOADING ARMS

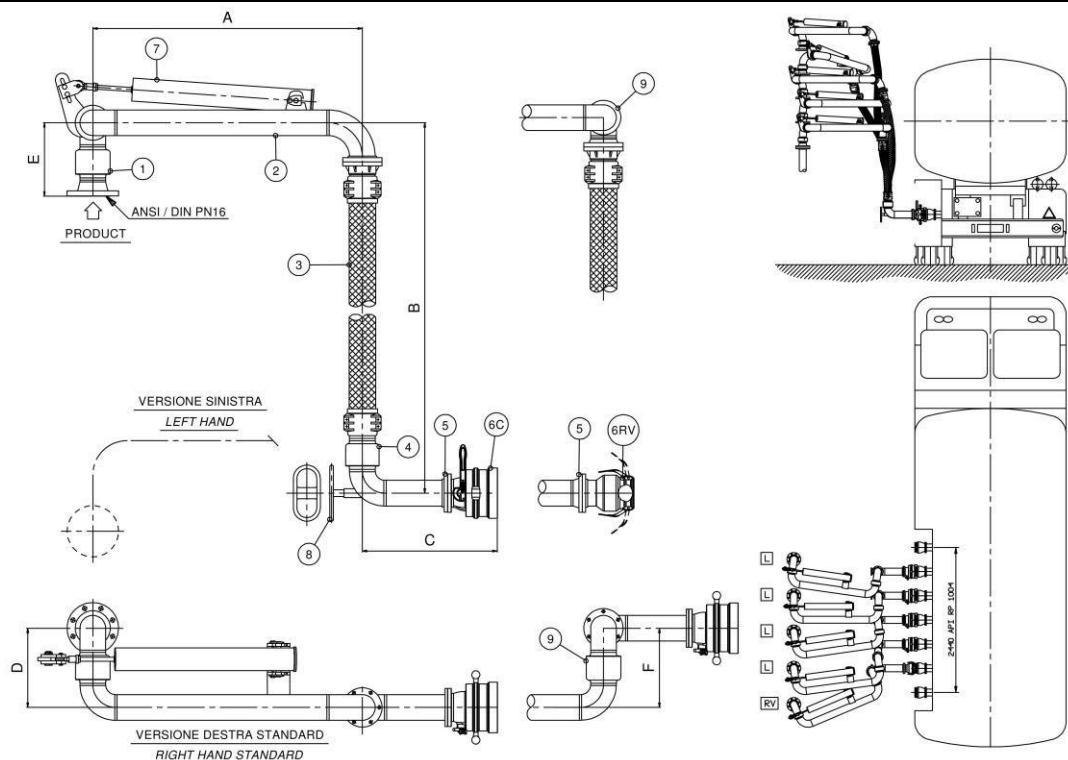


Tailored Loading Arm Solutions for Efficient Tank Filling

At **INFILTEK**, we specialize in high-quality loading arms for the safe and efficient transfer of liquids in various applications, including top and bottom loading operations. Our solutions are designed for use with railcars, trucks, and storage tanks, providing seamless handling of liquids such as hazardous chemicals, petroleum products, and food-grade materials. Fully customizable, our loading arms are tailored to meet specific operational needs. Top loading arms are perfect for both open and closed systems, with optional vapor recovery to enhance environmental safety. Bottom loading arms, ideal for ground-level operation, reduce vapor emissions and improve operator safety.

In addition to loading arms, we offer custom skid-mounted systems for diesel filtration in rail operations. These turnkey solutions are built to the highest standards of fuel cleanliness, ensuring reliable operation across large-scale projects. Our systems include filtration, pumping, and automated monitoring, with customizable options for flow rates, filtration levels, and control systems, all tailored to meet the specific needs of our clients.

Single Range Bottom Loading/Vapour Recovery Arm 750/740 Model with Vertical Flexible Hose



Operating Conditions

Design Pressure	10.0 Bar G
Test Pressure	15.0 Bar G
Design Temperature	-15° C / +65° C -40° C / +65° C
Seal Material	VITON PTFE Special VITON (**)
Flow Rate	3"-75 mc/h Max 4"-150 mc/h Max

Standard Dimensions

Dn.	3"	4"
A	900/1800	900/1800
B	2500/4000	2500/4000
C	650	650
D	296	353
E	289	328
F	296	353
Weight	90	120

Notes

- (*) Swivels 2174 Mod. installed on 750 Mod. loading arms
Swivels 2004 Mod. installed on 740 Mod. loading arms

Options

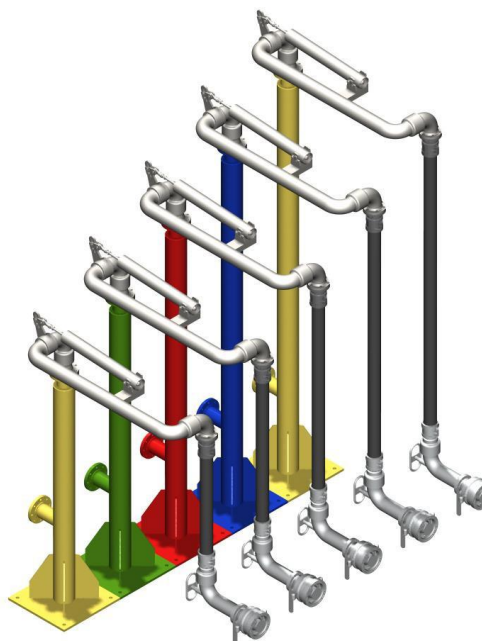
- Additional swivel pos.9
- Safety breakaway coupling OMC 4222 Model
- Check valve 2141 Model
- Proximity switch to signal coupler connected
- Locking device arm in parking position C-3784
- Sight glass 2424 Model
- Standpost
- (**) Suitable for BIO-Products or low temperature
- NDT test (X-Ray-LP-MT) available on request

N. Description

- | | |
|-----|-------------------------------------|
| 1 | Style 50 double swing joint |
| 2 | Tube assembly |
| 3 | Flexible hose with safety collars |
| 4 | Style 30 swivel elbow |
| 5 | T.T.M.A. flange |
| 6C | Dry-disconnect coupling |
| 6RV | Vapour return coupler |
| 7 | Spring balancing cylinder |
| 8 | Handle |
| 9 | Style 40 additional swivel (Option) |

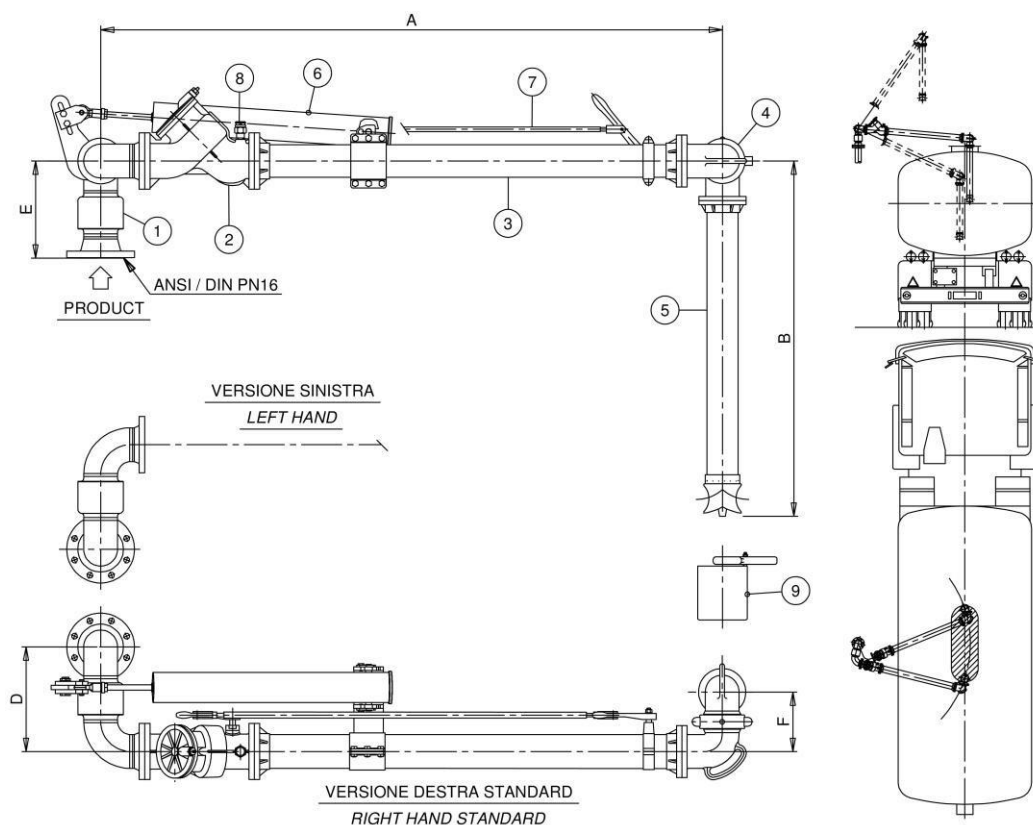
Dwg/Mod

- | |
|------------|
| 2174 (*) |
| 2004 (*) |
| . |
| 2175 |
| . |
| OMC C-3659 |
| OMC C-3682 |
| 05182 |
| 2174 (*) |
| 2004 (*) |



**INFILTEK**

Fixed range top loading arm 622-BC / 722-BC Model



Operating Conditions

Design Pressure	10.0 Bar G
Test Pressure	15.0 Bar G
Design Temperature	-15° C / +65°C
Seal Material	VITON Nitrile (Buna N) Special VITON (*)
Flow Rate	3"-75 mc/h Max 4"-125 mc/h Max 6"- 280 mc/h Max

N. Description

1	Style 50 double swing joint
2	Loading valve (stay/hold-open)
3	Tube assembly
4	Drop tube swivel
5	Drop tube with "T" deflector
6	Spring balancing cylinder
7	Valve remote control
8	3/8" NPT Vacuum breaker
9	Nipper drip bucket

Dwg/Mod

2174 (*)
2004 (*)
504
536
2359-T
05182
2356
2336
2408

Standard Dimensions

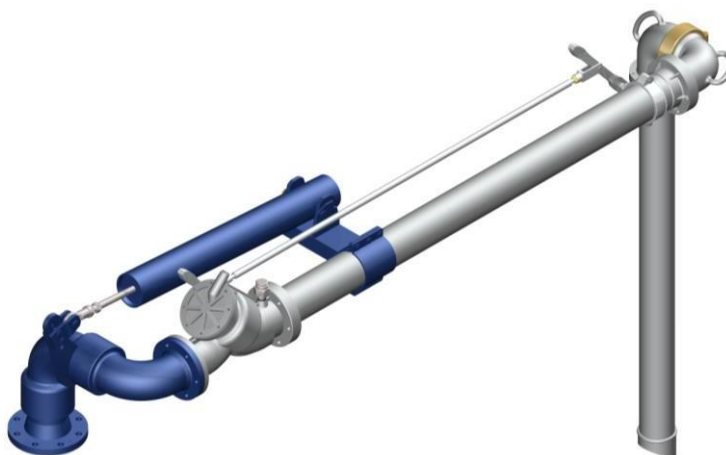
Dn.	3"	4"	6"
A	2100	2100	2100
B	1600	1600	1600
C	/	/	/
D	296	353	525
E	289	328	462
F	174	201	278
Weight	85	105	200

Notes

(*) Swivels 2174 Mod. installed on 622-BC Mod. loading arms
Swivels 2004 Mod. installed on 722-BC Mod. loading arms

Options

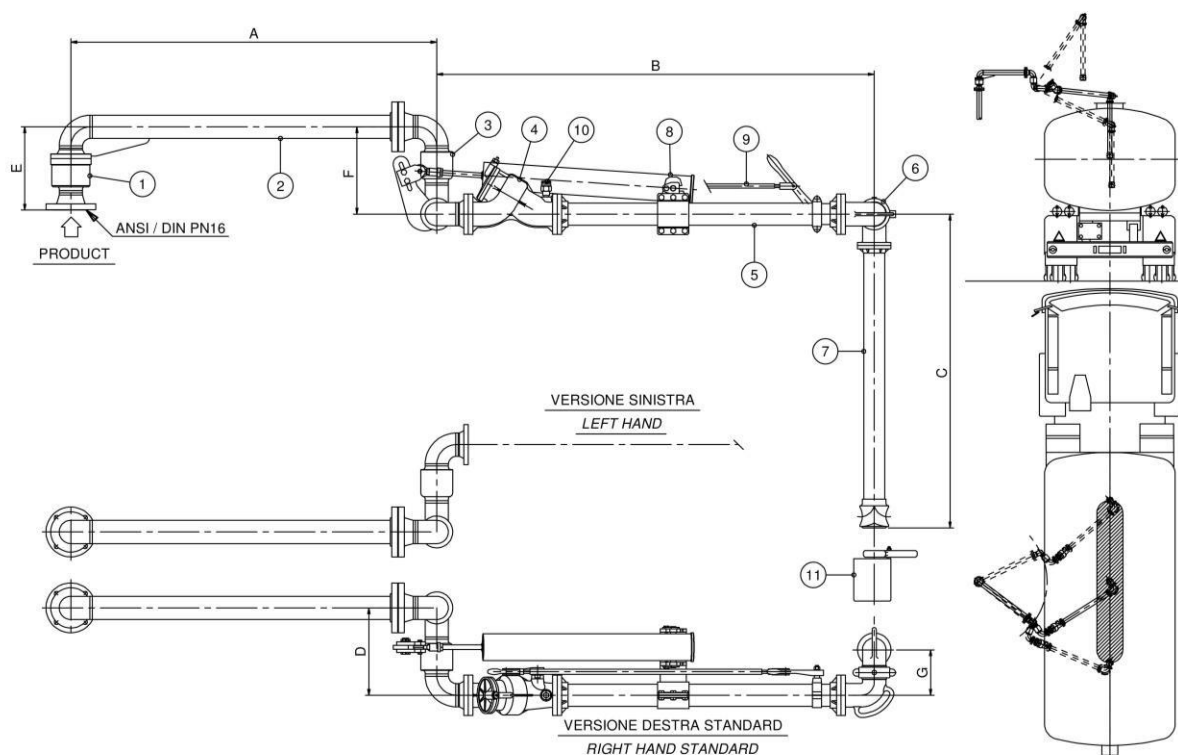
- Pos.5 with flute beak end (2359-BF)
- Pos.5 with flow deflector (2359-D)
- Microswitch to signal valve opened/closed
- (*) Suitable for BIO-Products





INFILTEK

Loading arm from above to long range of action Model 2239-UB with self-supporting rotating section



Condizioni Operative

DESIGN PRESSURE 10.0 Bar G

TEST PRESSURE 15.0 Bar G

DESIGN TEMPERATURE -15° C / +65° C

SEAL MATERIAL VITON
Nitrile (Buna N)
VITON Speciale (*)

RECOMENDED FLOW 3"-75 mc/h Max
4"-125 mc/h Max
6"- 280 mc/h Max

N. Description

- 1 High load base joint style 30
- 2 Revolving section
- 3 Double joint style 70
- 4 Delivery valve (with/without stop)
- 5 Primary Tube
- 6 Drop Tube Swivel
- 7 Drop tube with "T" Terminal
- 8 Spring Balance Unit
- 9 Valve remote link
- 10 Inlet for optional vacuum breaker 3/8" NPT
- 11 Optional clamp on drip bucket

Dwg/Mod

2174-HD
.
2174
504
.
536
2359-T
05182
2356
2336
2408

Standard Dimensions

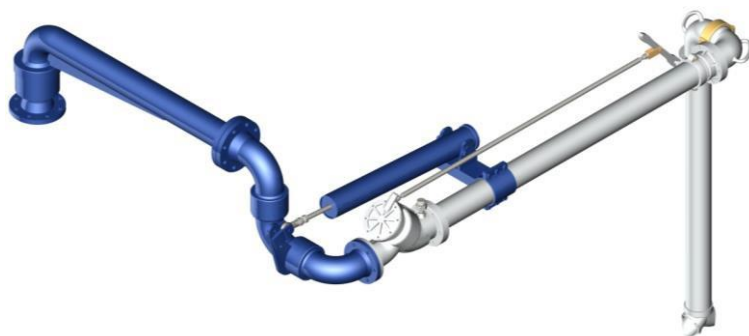
Dn.	3"	4"	6"
A	800/2000	850/2000	1000/2000
B	2100	2100	2100
C	1600	1600	1600
D	296	353	525
E	318	375	491
F	296	353	525
G	174	201	278
Weight KG	125	165	335

Note

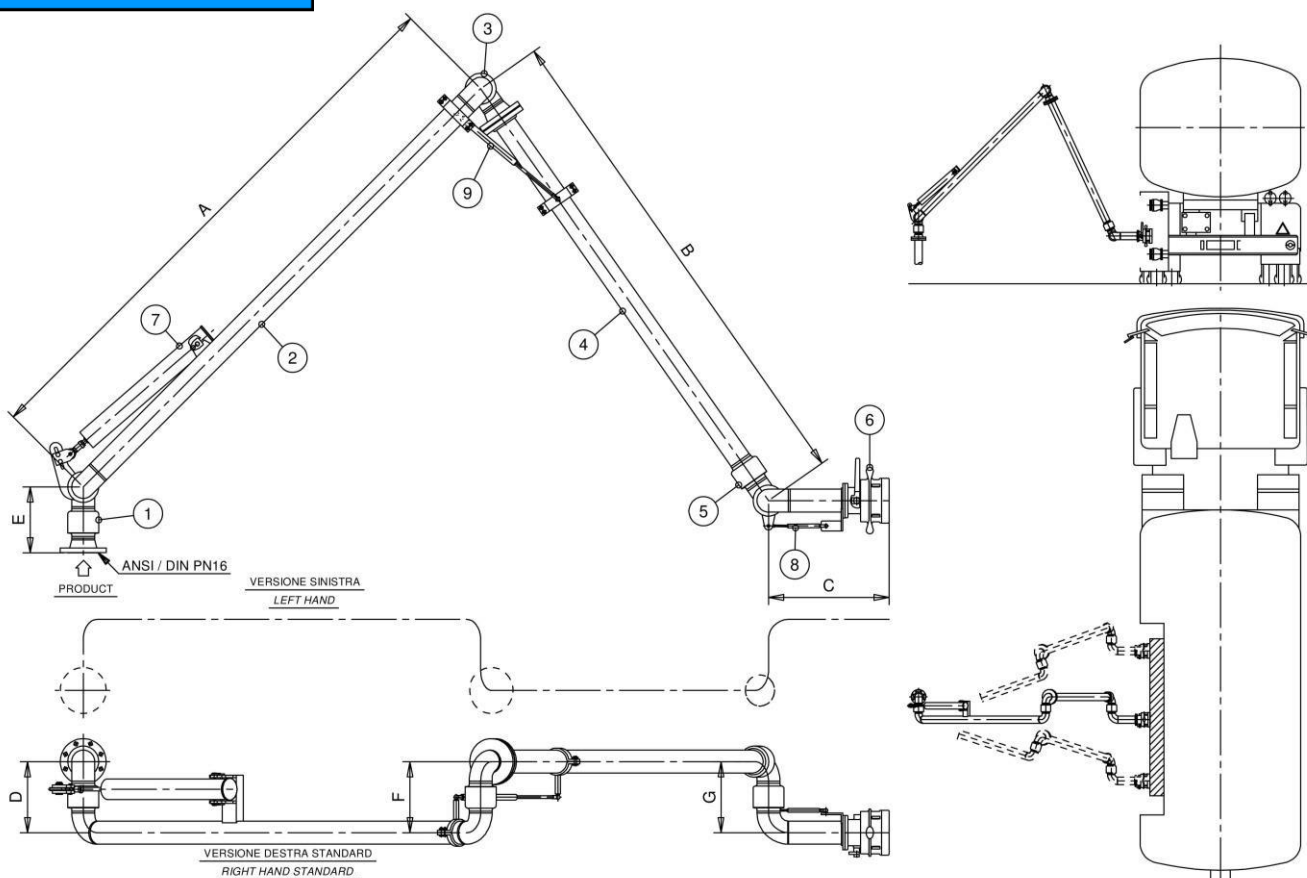
Also available the Mod. 2239-UA version with intermediate joint Pos.3 facing upwards

Options

Custom Dimensions available



“A frame” triple range bottom loading arm 2475 Model



Operating Conditions

Design Pressure	10.0 Bar G
Test Pressure	15.0 Bar G
Design Temperature	-15° C / +65°C
Seal Material	VITON PTFE Special VITON (*)
Flow Rate	3"–330 LPM Max 4"–660 LPM Max

N.	Description
1	Style 50 double swing joint
2	Inboard pipe
3	Style 40 swivel joint
4	Outboard pipe
5	Style 50 double swing joint
6	Dry-disconnect coupler
7	Spring balancing cylinder
8	Gas spring balancer
9	Gas spring balancer

Dwg/Mod

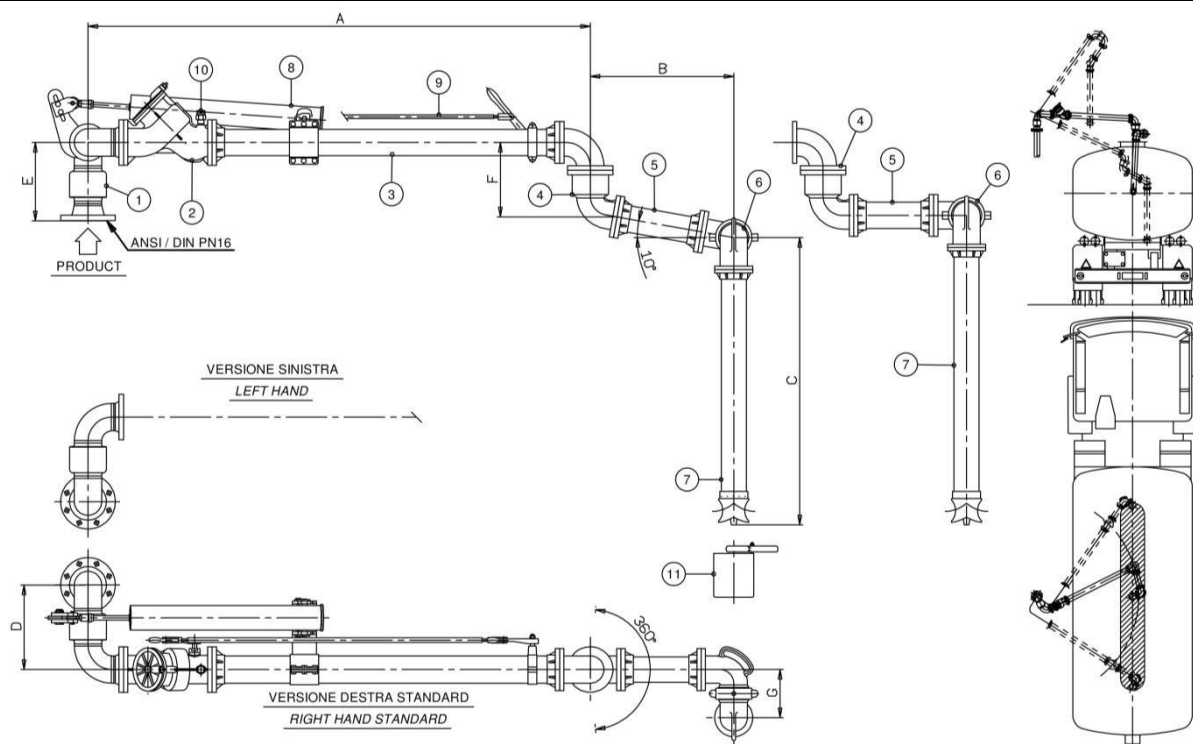
2174
.
2174
.
2175
OMC C-3659
05182
.
.

Standard Dimensions

Dn.	3"	4"
A	1500/2800	1500/2800
B	1500/2800	1500/2800
C	600	600
D	296	353
E	289	328
F	279	343
G	279	343
Weight	130	160



Variable range top loading arm 621-BC / 721-BC Model



Operating Conditions

Design Pressure	10.0 Bar G
Test Pressure	15.0 Bar G
Design Temperature	-15° C / +65°C
Seal Material	VITON Nitrile (Buna N) Special VITON (*)

Flow Rate	3"-75 mc/h Max 4"-125 mc/h Max
-----------	-----------------------------------

Standard Dimensions

Dn.	3"	4"
A	2100	2100
B	600	600
C	1600	1600
D	296	353
E	289	328
F	238	305
G	174	201
Weight	90	115

Notes

- (*) Swivels 2174 Mod. installed on 621-BC Mod. loading arms
Swivels 2004 Mod. installed on 721-BC Mod. loading arms

Options

- Pos.7 with flute beak end (2359-BF)
- Pos.7 with flow deflector (2359-D)
- Microswitch to signal valve opened/closed
- Rotational microswitches to signal arm side in use
- (*) Suitable for BIO-Products
- NDT test (X-Ray-LP-MT) available on request

N. Description

1	Style 50 double swing joint
2	Loading valve (stay/hold-open)
3	Tube assembly
4	Intermediate swivel
5	Secondary tube assembly (horizontal or slopped)
6	Drop tube swivel
7	Drop tube with "T" deflector
8	Spring balancing cylinder
9	Valve remote control
10	3/8" NPT Vacuum breaker
11	Nipper drip bucket

Dwg/Mod

2174 (*)
2004 (*)
504
.
C-3443
.
536
2359-T
05182
2356
2336
2408

