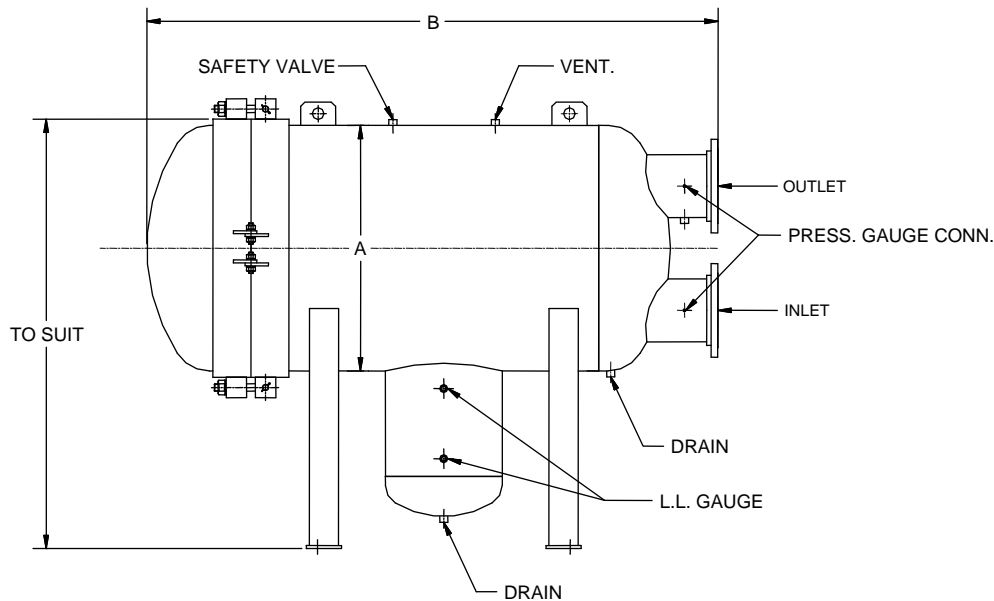


# FILTER SEPARATOR

## HORIZONTAL-TWO STAGE



The horizontal filter/separator design provides more convenient access to the cartridges than the vertical design. The end opening hinged cover swings open and the mounting assembly for both stages of cartridges is exposed for service. For refuelers and hydrant carts, saddle type legs and short sump is supplied.

VESSEL MODEL #	CAPACITY		DIMENSIONS (in)		WEIGHT lb.	IN/OUT SIZE in.
	gpm	l/min	A	B		
HB-1414	50	200	14	22	180	2
HB-1422	100	400	14	32	300	3
HB-1633	150	600	16	43	470	3
HB-1638	200	800	16	53	532	3
HB-1833	300	1150	18	43	540	4
HB-2033	400	1420	20	53	625	4
HB-2238	500	1800	22	55	725	4
HB-2438	600	2250	24	58	760	6
HB-2833	720	2700	28	56	875	6
HB-2838	850	3200	28	60	1065	6
HB-2844	1000	3800	28	66	1295	6
HB-2856	1200	4550	28	73	1370	8
HB-3656	1600	6000	36	84	2090	10
HB-4256	2000	7600	42	90	2800	12
HB-4856	2600	9850	48	90	3800	12
HB-5456	3600	13650	54	102	6500	12
HB-6056	4000	15200	60	108	8400	14

### STANDARD HOUSING DESIGN

- Welded Carbon Steel Construction (other materials available on request)
- ASME Code, Section VIII Construction (stamped and certified optional)
- Design Pressure 150psi @250°F (other design pressures available on request)
- Interior Epoxy Coated
- Exterior Prime Coated
- Swing Bolt Head Closure
- Hinged End Opening Cover
- Buna-N O-Ring Closure Seal
- Rod or Screw Base Coalescer Cartridge
- Knife Edge Cartridge Mounting Seals
- Spider Plate Attached to Vessel Wall

### CONNECTIONS

- Flanged Inlet/Outlet: 150#RF&SO
- Side/Bottom Drain Cplg.: 3/4" NPT 3000#
- Vent/Relief Valve Cplg.: 3/4" NPT 3000#
- Pressure Gauge Cplg.: 3/4" NPT 3000#

### ACCESSORIES

- Automatic Air Eliminator
- Pressure Relief Valve
- Differential Pressure Gauge
- Water Slug Control Valve
- Drain Valve

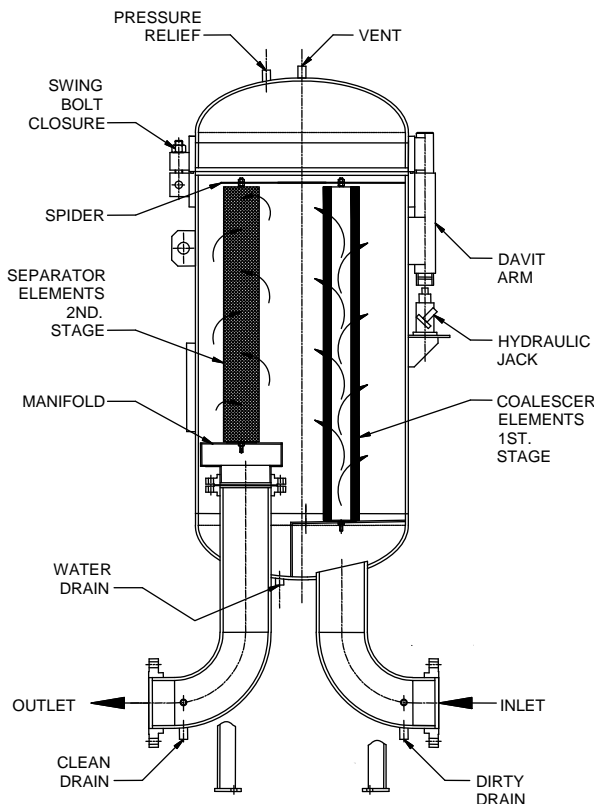
NOTES: SPECIFICATION AND SIZES CAN CHANGE WITHOUT PRIOR NOTICE; FOR REFERENCE ONLY; NOT TO BE USED FOR PRE-PIPING WORK; NOT TO SCALE  
ACCURATE DIMENSIONS AND DETAILS WILL BE ISSUED WITH ENGINEERING DRAWING

# INFILTEK

385 Watline Avenue, Mississauga, Ontario, L4Z 1P3, Phone (905) 568-1817 Fax (905) 568-1814

# FILTER SEPARATOR

## TWO-STAGE VERTICAL



### FEATURES:

- ASME Section VIII Div. 1 Boiler and Pressure Vessel Code
- Full range of flow rates available
- All welded construction
- Spider cartridge support
- Clean-out ports
- Standard size replaceable elements
- Fiberglass media Coalescer elements
- Teflon screen or cellulose media Separator elements

### INFILTEK FILTER/SEPARATORS COMPLY FULLY WITH API 1581 PERFORMANCE SPECIFICATION

INFILTEK two-stage Vertical Filter Separator housings are mechanical devices designed to filter solids and separate two immiscible liquids. Through full-scale testing, INFILTEK filter separators conform to latest API Bulletin 1581 performance specifications.

INFILTEK filter separators are designed to separate two immiscible liquids and remove particulate contamination through a two stage coalescer - separator process.

### 1<sup>ST</sup> STAGE: COALESCING – FILTERING

The contaminated product enters the inlet nozzle and passes through the coalescer cartridges. Essentially all solids are removed and emulsions are broken (coalesced), causing large water droplets to form which settle to water accumulation section for draining.

### 2<sup>ND</sup> STAGE: SEPARATING

Clean fuel flows to the separator cartridges. These contain Teflon coated screen media which blocks the passage of water droplets and provide a second, highly efficient, positive filtration barrier. Cartridges are reusable. The water separates from the product by gravity and accumulates in the sump where it can be drained off. The clean product is discharged through the outlet nozzle.

### APPLICATIONS:

INFILTEK Filter – Separators are typically used to remove water from hydrocarbons such as:

- Gasoline, diesel, kerosene, naphta
- Hydraulic Oil
- Turbine Lube Oil

Separating any other two liquids requires:

- Immiscibility and interfacial tension
- Different specific gravities

Consult INFILTEK for specific applications.

### OPTIONS:

- Epoxy lined Carbon Steel, Stainless Steel, Aluminum or Alloy construction
- Connections: flanged, threaded, victaulic or welded
- Quick opening closure
- High pressure design
- Dimensions to suit existing pipework
- NDE: radiography, liquid penetrant, magnetic particle, impact toughness, hardness, etc.

### ACCESSORIES:

- Differential pressure gauge
- Automatic air eliminator
- Pressure relief valve
- Auto or manual drain valve
- Water slug control valve
- Liquid level gauge
- Sump immersion heater
- Sampling probe
- Work platform and ladder

NOTES: SPECIFICATION AND SIZES CAN CHANGE WITHOUT PRIOR NOTICE; FOR REFERENCE ONLY; NOT TO BE USED FOR PRE-PIPING WORK; NOT TO SCALE  
ACCURATE DIMENSIONS AND DETAILS WILL BE ISSUED WITH ENGINEERING DRAWING

# INFILTEK

385 Watline Avenue, Mississauga, Ontario, L4Z 1P3, Phone (905) 568-1817 Fax (905) 568-1814