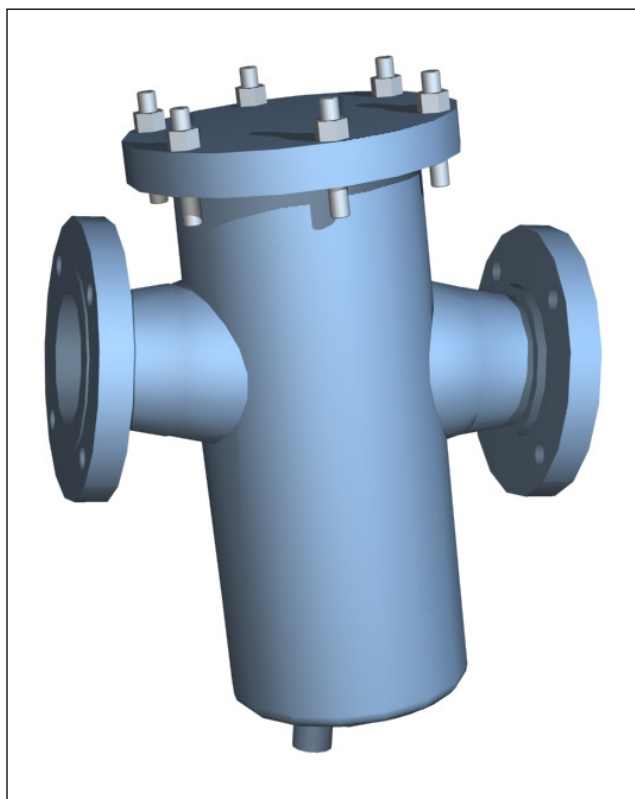


STS STRAINERS

2" THRU 12" SPECIFICATIONS



INFILTEK Strainers are necessary to metering systems and pumps as a protection against dirt or foreign matter. They are designed especially for fast flows and maximum meter protection. The exceptionally large screen area and streamlined flow passages not only provide for minimum pressure drop, but allow for less frequent cleaning of basket. When it becomes necessary to clean the basket, it is simple operation to loosen the cover, bolts, remove cover and lift out the basket. Strainers (2" - 12") have separable inner basket to facilitate cleaning and basket replacement.

Strainers are available for pressures from 150 to 1440 lbs. Standard screens are 40 mesh with 80 mesh. Special meshes as indicated are also available.

Operating Specifications

Maximum Working Pressure

Flange Class *	Working Pressure PSI
150	275
300	300
300	720
600	1440

* ANSI B16.5 raised face

Temperature Range

Range	Elastomer
-20°F to 225°F (-29°C to 107°C)	Buna-N (Std.)
0°F to 400°F (-18°C to 205°C)	Viton
400°F to 425°F (225°C to 235°C)	Teflon

Basket Screen

Mesh	Opening Size Inches	Percent Open Area Through Inner and Outer Baskets
4	0.203	47.2%
10	0.075	40.5%
20	0.036	37.3%
40(Std.)	0.015	25.9%
80	0.007	22.6%

STS STRAINERS

2" THRU 12" SPECIFICATIONS



Standard Design Features

Pressure Vessel

- Designed and fabricated per ANSI B31.4, except x-ray inspection is omitted.
- Body Material – Carbon Steel pipe or rolled plate.
- Flanges – Carbon Steel Raised Face per ANSI B16.5
- Closure – Quick release.
 - "Swing Bolt, Hinged" Style (Model "D") (300psi maximum working pressure rating).
 - "Davit" Style (Model "C") (720-1,440psii max. working pressure rating).
 - Buna-N O-Ring.
- Air Vent – 1-1/2" NPT
- Basket Differential Pressure Taps – 1/2" NPT.

Basket

- Carbon Steel Perforated Plate.
 - 5/16" diameter holes on 3/8" staggered centers.
 - 65% open area.
- Adjustable handle for hold-down and easy removal of basket.
- Differential Burst Pressure – 50 psig.

Pressure Drop Reference

P.D. Meter Strainers

Diameter		Flow Rate		
Inlet	Body	USGPM	BPH	m ³ /h
6"	10"	1,000	1,400	225
8"	14"	1,600	2,300	365
10"	18"	3,000	4,300	675
12"	18"	4,200	6,000	950

Modeling

Example: STS-150-4 - 40 - 10

Flange Class	Outer Basket *Included on all models*
Inlet Flange Size	Inner Basket Mesh Size

STS STRAINERS

2" THRU 12" SPECIFICATIONS



Optional Features

Pressure Vessel

- *Design, fabrication and inspection:*
 - *ANSI B31.4 including x-ray inspection.*
 - *ANSI B31.3*
 - *ASME Section VIII.*
- *Closure:*
 - *Spring Assist for Swing Bolt, Hinged Closure ("D" Model only).*
 - *Viton O-Ring.*
- *Automatic Air Venting Device.*
- *Basket Differential Pressure Gauges:*
 - *Gauge: 0-30 psid; 2,000psig working, stainless steel body mounted with two (2) carbon steel isolation valves.*
 - *Gauge and isolation valves (same as above), plus Reed Switch for remote indication.*
- *Pressure Alert Valve:*
 - *A safety feature that warns operator of residual pressure in strainer before closure is opened.*

Basket

- *Start-Up Liner – 10 mesh 304 stainless steel.*
- *Special perforated pate baskets:*
 - *Carbon Steel: a 1/4" diameter hole on 5/16 centers (58% open area).*
 - *304 Stainless Steel: 5/16" diameter holes on 3/8" centers.*
 - *304 Stainless Steel: 1/4" diameter holes on 5/16" centers.*
 - *Other perforation sizes and materials on special request.*